

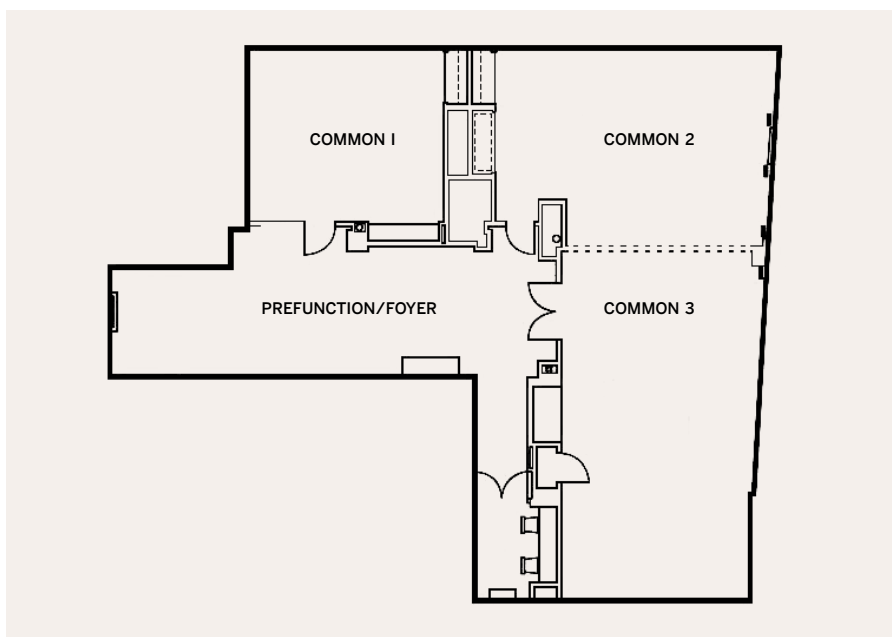
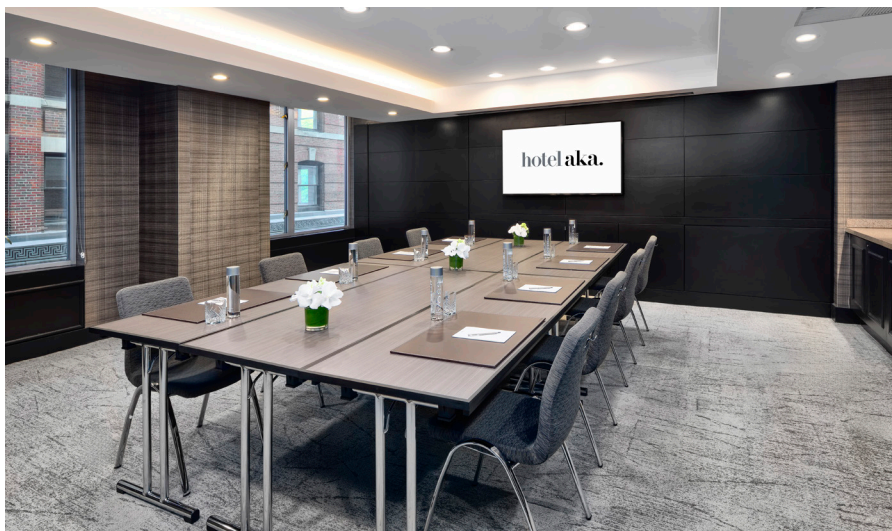
Meeting & Event Spaces Ideally situated in the heart of Downtown, Hotel AKA Boston Common offers a dynamic setting for corporate meetings, receptions, and social gatherings of all sizes. Our collection of versatile venues accommodates up to 130 guests and is supported by integrated audiovisual capabilities and complimentary Wi-Fi to ensure a seamless experience. Floor-to-ceiling windows invite natural light into each space, creating an energizing environment designed to inspire connection and productivity. Curated food and beverage offerings—from elevated breakfast selections to thoughtfully prepared lunches—keep attendees engaged and refreshed throughout the day.

The Bosworth Restaurant + Bar

Our restaurant venue perfectly blends a warm and chic atmosphere, providing an ideal setting for creating lasting memories. Offering a range of options from semi-private to fully private spaces for up to 165 guests. Enjoy chef-curated culinary offerings, whether you prefer a seated dinner or reception-style gathering. Ideal for engagement parties, welcome dinners, intimate wedding receptions, day-after brunches, corporate events, and more.

A.BAR

Our lobby bar and lounge space can be made available for exclusive gatherings, offering a refined and intimate setting for private events of up to 20 guests. Ideal for pre-dinner receptions, post-meeting cocktail hours, and curated cocktail experiences, the space delivers a stylish, eclectic atmosphere paired with attentive service and tailored food and beverage offerings—creating a memorable backdrop for elevated, small-scale events.



MEETING SPACES

ROOM	DIMENSIONS	SQ FT	CEILING	CLASS ROOM	THEATER	RECEPTION	BANQUET	CONFERENCE	H-SQ. U-SHAPE
Common 1	21 x 20	420	9'6"	15	40	35	30	10	18
Common 2	29 x 20	580	9'6"	24	60	58	48	14	36
Common 3	20 x 37	740	9'6"	30	80	74	60	20	42
Common 2 & 3	—	1320	9'6"	55	140	130	110	32	66
Prefunction/Foyer	21 x 17	360	9'6"	—	—	50	—	—	—
a.bar	—	—	—	—	—	15-20	—	—	—
The Bosworth Full Buyout	—	—	—	—	—	165	70	—	—
The Bosworth Semi Private	—	—	—	—	—	35	20	—	—

